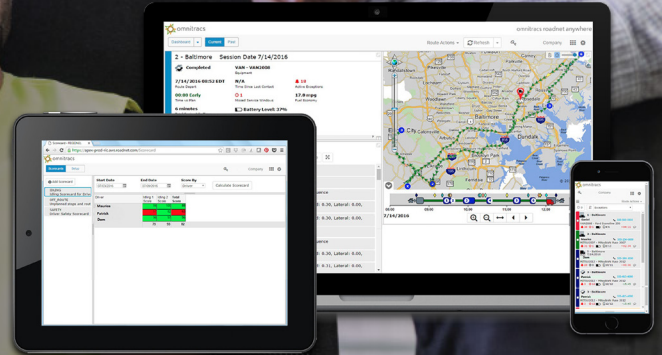


# Fleet telematics

Reduce costs, increase safety, and eliminate downtime by monitoring driving behavior and vehicle status, health, and location in real time.



## Track the data that matters to your organisation

Monitor a robust set of data-points from across your fleet with Fleet GPS Tracking – including:

- Maintenance
- Engine idling
- Speed levels
- Safety issue

## Solution highlights



Small-form-factor in-cab hardware that's easy to install



Full integration with other Omnitracs solutions



Over 30 automated and configurable reports



Intuitive user interface



# The extra mile

Get visibility into every route, stop, and event

The screenshot displays a software interface for tracking a truck. On the left, a sidebar shows details for 'TRUCK1 - TRUCK1' on '2/4/2015'. It lists the driver as 'Parker, Peter' and the equipment as 'Barton, Clint'. A table of stops is shown with columns for 'Departure Time', 'Location Address', and 'Engine'. The stops are: 02:38 EST (no address), 03:41 EST (N FRONT ST YORK PA 17402), 04:41 EST (US 22 W / US 322 W / WILLIAM PENN HWY [BENVENUE RD] DUN...), 06:32 EST (139 EAST COLLEGE AVENUE 139 EAST COLLEGE AVE PLEASA...), 07:40 EST (1319 BENNER PIKE STATE COLLEGE PA 16801), 08:33 EST (2833 EAST COLLEGE AVE STATE COLLEGE PA 16801), and 10:04 EST (3102 EAGLE VALLEY ROAD MILL HALL PA 17751). Below the table is a 'Notifications' section with a 'Harsh Cornering' event at 11:14:31 EST, showing G Force - Forward: 0.26, Lateral: N/A, and Vertical: N/A. On the right, a map shows the truck's route through Pennsylvania, with a yellow arrow indicating the path and a red location pin. The map includes a 'Timeline' view at the bottom.



See every route, stop, and event



Monitor critical events and react proactively



Identify trends that drive up costs across your fleet



Eliminate downtime and increase productivity

Find out more at [marketmotion.com.au](http://marketmotion.com.au)